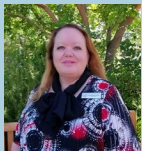




## Leadership Team



**Julie Gallaher**  
**PRINCIPAL**

[Julie.Gallaher185@schools.sa.edu.au](mailto:Julie.Gallaher185@schools.sa.edu.au)



**Cleo de Gouw**  
**DEPUTY PRINCIPAL**

[Cleo.DeGouw899@schools.sa.edu.au](mailto:Cleo.DeGouw899@schools.sa.edu.au)



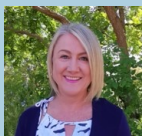
**Kieran Moors**  
**ASSISTANT PRINCIPAL**

[Kieran.Moors696@schools.sa.edu.au](mailto:Kieran.Moors696@schools.sa.edu.au)



**Rachel Bishop**  
**ASSISTANT PRINCIPAL**

[Rachel.Bishop917@schools.sa.edu.au](mailto:Rachel.Bishop917@schools.sa.edu.au)



**Tricia Ritchie**  
**BUSINESS MANAGER**

[Tricia.Ritchie907@schools.sa.edu.au](mailto:Tricia.Ritchie907@schools.sa.edu.au)

### KEY DATES

#### Pupil Free Days –

Term 3

Week 7 Monday, 2<sup>nd</sup> September

Term 4

Week 7 Friday, 29<sup>th</sup> November

#### Closed Day –

Term 4

Monday, 11<sup>th</sup> November

#### Sports Day

Term 4

Week 2 Friday, 25<sup>th</sup> October, during the day at the oval complex

#### End of Year Concert

Term 4

Week 8 Wednesday 4<sup>th</sup> December (Option 1)

Thursday, 5<sup>th</sup> December (Option 2)

#### Quiz Night

Term 3

Week 3 Saturday, 10<sup>th</sup> August

# Newsletter

ISSUE 6

28 JUNE 2019



## Information from Julie Gallaher

It is hard to believe that we are halfway through another year and that Term 2 is nearly over!

There has been so many memorable moments with a great deal more to come as we head in to the last half of 2019.



**Fun at the Disco**

### CONGRATULATIONS AND THANK YOU TO OUR FUNDRAISING COMMITTEE

Once again, our incredible Fundraising Group have provided events for both students and families this term. This band of supporters work tirelessly to bring our community together by offering a range of events across the year as well as bringing in significant funds that is used directly to support students i.e. more readers, Year 7 Graduation, flexible furniture, IT equipment, funding towards the renewal of playgrounds to name but a few. We appreciate student and families support with the attendance at events.

### External Review

The External Review was an involved process that was over two days in Week 6 of this term. The Review Officers spent time interviewing Staff, a range of students, Governing Councillors and some parents. I am still waiting for the final report to be provided. When the report is received it will be shared with staff and Governing Councillors. I will provide information via a school newsletter and you will have access to the whole report as it will be put onto the school website.



**Reconciliation Tree**



**Helping at the Working Bee**

### HUGE THANKS TO EVERYONE THAT SUPPORTED THE WORKING BEE; VERY MUCH APPRECIATED BY EVERYONE.

I would like to acknowledge and thank the members of the Sustainability Group for their commitment and forward thinking to see that over time our grounds and facilities are improved to create more engaging places for our students and families.

### Semester 1 Report

The final touches are being added to the student reports and the printing phase has begun. You will notice some differences with the layout as teachers have used the new Sentral programme as the portal for collating student information and reporting comments. We will continue to work on improving the format and layout in readiness for the Semester 2 Report.

The Semester 1 Reports will be sent home on Wednesday, 3<sup>rd</sup> July.

Cont'd page 2

**Address:**

**Website:**

**Email:**

**Fax:**

**Find us on:**

**2 Marlborough Road, Westbourne Park, SA 5041**

**[www.wbourneps.sa.edu.au](http://www.wbourneps.sa.edu.au)**

**[dl.0475\\_info@schools.sa.edu.au](mailto:dl.0475_info@schools.sa.edu.au)**

**8373 3057**



**Government of South Australia**  
Department for Education and Child Development

## Information from Julie Gallaher (cont'd)

### Parent Opinion Survey

The Parent Opinion Survey is now available via the Skoolbag link. We do value the information you provide and greatly appreciate you taking the time to complete. Please note that the survey closes on Friday, 12<sup>th</sup> July.

### Staffing Update for Term 3

We thank Andrew Kite for teaching PE for the last five weeks of Term 2.

We will welcome back Sean Mullin and Joel Bawden from their leave from the start of Term 3.

Jenny Holliday will be on Long Service Leave for all of Term 3, and we are fortunate that Sarah Reynolds will stay on teaching Monday/Tuesday and alternate Wednesdays in P1.

Maria Thomas will be on Long Service Leave for the first five weeks, and during this time Lee Dowd will teach full time in J2.

### The last word

I would like to acknowledge and thank both staff and students for a productive term. We have a number of exciting events to look forward to during Term 3 such as Pedal Prix Race 2 and 24 hour at Murray Bridge, Wakakiri performance at the Entertainment Centre, Choir performing at the Festival Theatre, Book Week celebrations, more camps and excursions, Quiz Night as well as some exciting learning.

I wish everyone a safe and happy holiday when it starts late next week.

### Julie Gallaher Principal



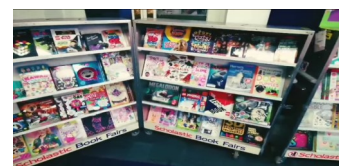
Wallabies visit



Pedal Prix



Peter McPheat's Mid Year Concert



Scholastic Book Fair

### INDUSTRIAL ACTION

It is disappointing that there hasn't been an agreement reached with respect to the Enterprise Bargaining that is resulting in a full-day strike across state schools and preschools on Monday, 1<sup>st</sup> July (next week). Please note that our site is officially closed next Monday due to the industrial action.

### TERM 2 WORKING BEE

At the recent Working Bee, the following was achieved: over 150 locally native, butterfly attracting plants planted, two new raised beds set up (ready for planting with veggies), two new wine barrels set up ready for lemons for use in the canteen, huge effort weeding the whole school, paths swept and tidied, chess lane bricks set back in place; shrubs pruned and old stakes and ties removed and gutters cleared around the Resource Centre.

An awesome morning tea was provided, and there were opportunities to meet new friends with lots of involvement from the students.



Address:  
Website:  
Email:  
Fax:  
Find us on:

2 Marlborough Road, Westbourne Park, SA 5041  
www.wbourneps.sa.edu.au  
dl.0475\_info@schools.sa.edu.au  
8373 3057



Government  
of South Australia  
Department for Education  
and Child Development

The Westbourne Park Primary Fundraising Committee bring you...

# 2019 WPPS QUIZ NIGHT

Saturday 10th August

Marlborough Road Hall

Doors open at 6:30 for a 7pm start

Main and silent auctions

Bring cash for raffle and games

**Theme: When I Grow  
Up I Want To Be A...**



Tickets \$25 ea      Tables of 10

On sale via QKR or the Front Office.

Don't miss out!

Visit the Front Office to book your table now!

Address:  
Website:  
Email:  
Fax:  
Find us on:

2 Marlborough Road, Westbourne Park, SA 5041  
[www.wbourneps.sa.edu.au](http://www.wbourneps.sa.edu.au)  
[dl.0475\\_info@schools.sa.edu.au](mailto:dl.0475_info@schools.sa.edu.au)  
8373 3057



Government  
of South Australia

Department for Education  
and Child Development



## M4 Excursion to Parliament House

On Friday, 21st of June, we had an amazing excursion to Parliament House in the city.

First, we walked through the doors into the entry room. It was stunning, so nice, tall and amazing but we had to be very quiet, not a word, we then had to go through all the security, metal detectors but everything was fine.

We met the person doing the tour, Ms Caroline Powers; she is the Member in the House of Assembly for Elder, speaking of the House of Assembly, that was the next place we went. Caroline told us that the House of Assembly was where laws and debates are discussed.

We all had a debate in the House of Assembly about if it should be compulsory or not to walk to school. The 'It should be compulsory' was the winner. In the House of Assembly, everything was green, and you could see the bloodline very clearly.

Next we went to the Upper House or the Legislative Council where laws are finalized. We didn't do much in there, as we couldn't sit on the seats, so we just talked about how the Black Rod was kept here and how it's red because it was for the Lords and red's a royal colour.

After looking around the Upper House, we had a visit to their old library. In the library, they had some gigantic world globes and a copy of the Magna Carta. In the hallway just past the library we saw a little room that was blocked off with glass and it was fireproof because it had some rare books in it.

Seeing all of the different houses was awesome, but it was nice to walk around. Everyone saw some awesome things like a glassed off fireproof bookcase, photos and models of well-known people, and just the simple things like the spiral stairs. Sadly, our journey ended, so we went to the toilet and headed back to the Main Hall, and then we left.

**Poppy, Harper and Tom H**  
**M4**



Address:  
Website:  
Email:  
Fax:  
Find us on:

2 Marlborough Road, Westbourne Park, SA 5041  
[www.wbourneps.sa.edu.au](http://www.wbourneps.sa.edu.au)  
[dl.0475\\_info@schools.sa.edu.au](mailto:dl.0475_info@schools.sa.edu.au)  
8373 3057



## Pedal Prix

Pedal Prix is offered to the year 6/7 students to participate in. The bikes we race aren't your common bicycle though, they are enclosed, and you lie down. Our school participates in three races, two of which go for six hours and one that goes for 24 hours. Our first race was last Sunday at Victoria Park in the city. Our team did an awesome job and all riders took responsible risks.

Our next six hour race is coming up fast and we will be bringing our A game! In each race we add in a new element to help us succeed. For the next race we will be adding in radios so that we can always communicate with our teachers and riders, and we will also be using our new, fully enclosed bikes. By the 24 hour race, we will be using the tracking system, the radios, our modified water bottles so that we can drink while we are riding and the new, fully enclosed bikes. In the six hour races we only race other school students but for the 24 hour race we will be racing adults as well.

Race two is the Sunday of week 1, term 3, from 10:00am-4:00pm at Victoria Park. Come join the party and help support our team as we put in another great team performance showing off our FRESH values and HOMS.

**Simon Bussell**



## Working with Children Clearance

### Helping keep children safe through new screening laws

Stronger, more effective and transparent screening laws for people working or volunteering with children have been introduced in South Australia. The new screening laws were recommended as part of federal and South Australian royal commissions, to help keep children safe in our communities. The new laws mean that from 1 July 2019 everyone working or volunteering with children must have a valid child-related check.

Also changing from 1 July 2019 is the state's current system for child-related employment screenings, which will be replaced with a working with children check (WWCC). This new check is coming in to better protect your children and make sure that people working or volunteering with children are suitable. It does this through a monitored and more robust assessment of a person's eligibility to work or volunteer with children. Because the check is monitored, immediate action can be taken if a person is charged with a concerning offence. The new check covers off on a person's national criminal history including all spent convictions, pending and non-conviction charges, and other disciplinary and child protection information.

A WWCC is valid for five years and is portable across roles and organisations throughout South Australia.

Current, valid child-related employment screening checks done by DHS/DCSI will be recognised as a WWCC until they expire. There is also a 12 month transition period for anyone with a National Police Certificate assessed by their organisation, with the certificate valid till 1 July 2020.

For most people, this means they don't need to do anything to be ready for the new law starting on 1 July 2019.

For more information about the new check visit the [DHS website](#).



**Government of South Australia**  
Department for Education

**Address:** 2 Marlborough Road, Westbourne Park, SA 5041  
**Website:** [www.wbourneps.sa.edu.au](http://www.wbourneps.sa.edu.au)  
**Email:** [dl.0475\\_info@schools.sa.edu.au](mailto:dl.0475_info@schools.sa.edu.au)  
**Fax:** 8373 3057  
**Find us on:**



## School Banking Information Session

Our school is excited to offer the Commonwealth Bank School Banking program to all students.

School Banking is a fun, interactive and engaging way for young Australians to learn about money and develop good savings habits. Children who deposit money into their Youthsaver account through School Banking earn Dollarmites tokens, which they can save up and redeem for exciting rewards.

The rewards available during 2019 are:

- Scented Stackable Highlighters
- Snowy Origami Set
- Icicle Slapband Ruler
- Yeti Fluffy Notepad
- Arctic Owl Fluffy Keyring
- Scratch Art Cards
- Water Skimming Bounce Ball
- Polar Pencils & Pencil Toppers



School Banking is also a great fundraiser for our school. Our school receives a Regular Savers Contribution of \$5 for every 10 deposits processed per student as well as an Annual Contribution which is based on the number of students who made at least one School Banking deposit in the prior year.

School Banking is on Mondays.

We will be holding a School Banking Information Session at our school:

**Time:** 8:20am – 9:00am

**Date:** Monday, 5th August

**Location:** near the school office

Please join us and find out more about the School Banking program and how your child can get involved.

If you are interested in opening a Commonwealth Bank Youthsaver account for your child you can visit:

**[commbank.com.au/schoolbanking](http://commbank.com.au/schoolbanking)**

and click on the link to open a Youthsaver Account. A School Banking representative will be available at the Information Session to show you how you can do this.

## Do you have a child leaving at the end of the year?

Planning has begun for 2020, so if your child is leaving at the end of the year, please let the office know as soon as possible.

This information will help us greatly to make informed decisions about class structure and staffing needs for next year.

## Materials & Services Charges 2019

Just a reminder that the full amount is due **now**.

Thank you to those families who have paid.

**Tricia Ritchie**  
**Business Manager**

## 2019 Entertainment Books



Entertainment books can now be purchased on-line.

\$70.00 per book

To order your book, go to:

<http://www.entbook.com.au/161w433>

**Proceeds from sales help our Pedal Prix Team.**

## Habits of Mind

*Thinking about thinking  
(metacognition)*

Be aware of your own thoughts, feelings and actions. Explain to your child how you undertake routine tasks around the house when they are helping. Encourage your child to describe a plan of action before beginning to solve a problem. Talk about what worked and what they would do differently next time.



## 'Recycle and Win' Challenge

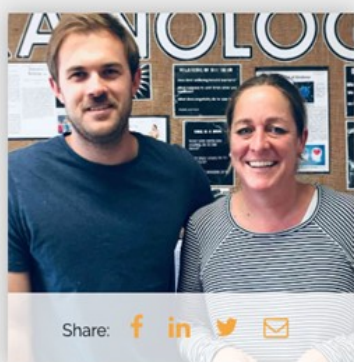
Our recycling station for your Oral Care Waste can be found out the front of LC4 or please leave items at the Front Office. You are also able to vote for our school daily via the link below. Please spread the word with your family and friends!

<https://www.terracycle.com/en-AU/contests/colgategardenvoting>

Christina Stevens  
LC4



## Please help us achieve this Challenge



### TEAMUC

Together members of this team are aiming for a cumulative target of 3,128 push-ups combined.

AMOUNT RAISED

**\$100**

DONATE

FUNDRAISE

GROW TEAM

### ABOUT THE TEAM



We're completing 3,128 push-ups in 21 days to raise awareness and funds for mental health. Please support us as we #pushforbetter this July.

TeamUC teachers, Rachel and Simon are raising money for youth mental health by participating in the Push up Challenge. This involves 3,128 push ups in 21 days. This is how many people passed away from mental health issues last year.

Please support this very worthy cause by sponsoring us at the following address: [www.thepushupchallenge.com.au](http://www.thepushupchallenge.com.au) and search for TEAMUC.

**Rachel and Simon**

Address: 2 Marlborough Road, Westbourne Park, SA 5041  
 Website: [www.wbourneps.sa.edu.au](http://www.wbourneps.sa.edu.au)  
 Email: [dl.0475\\_info@schools.sa.edu.au](mailto:dl.0475_info@schools.sa.edu.au)  
 Fax: 8373 3057  
 Find us on:  



Government  
of South Australia  
Department for Education  
and Child Development

# Kelly Sports

The **WILD WINTER SPORTS** program includes:

FOOTBALL, SOCCER, NETBALL, BASKETBALL

The WILD WINTER Sports program allows your child to experience fun, energetic, safe and highly active multi-sports sessions which will challenge and improve your child's motor and co-ordination skills.

The Kelly Sports coaches aim to develop and enhance the wide range of sporting skills of your child including kicking, catching and throwing whilst also improving strength, flexibility, hand-eye co-ordination, spatial awareness, cooperative skills and teamwork.

The program is a fantastic way for your child to develop sporting skills essential for all sports and will inspire children to give sport a go.

Our modified sports games provide lots of fun while skills are being developed.

## KELLY SPORTS IS A SPORTS VOUCHER PROVIDER

Enrol your child into a Kelly Sports program at your school and receive a **\$100 Sports Voucher discount** on your Kelly Sports fees. To enrol and/or redeem your sports voucher discount, register online at [www.kellysports.com.au](http://www.kellysports.com.au) OR fill out the enrolment form and send it to **PO BOX 91 Brighton SA 5048**. For further information about your Sports Voucher eligibility please visit [www.sportsvouchers.sa.gov.au](http://www.sportsvouchers.sa.gov.au).

<b>WHEN:</b>	Monday at Westbourne Park Primary School
<b>COMMENCING:</b>	29/7/19
<b>CONCLUDING:</b>	16/9/19 (No session 2/9 due to Pupil Free Day)
<b>TIME:</b>	3.25pm – 4.25pm
<b>YEAR LEVELS:</b>	Reception to Year 2
<b>COST:</b>	\$99.00 +GST ( <b>Total cost \$108.90</b> ) OR redeem your sports voucher and pay only \$8.90!
<b>REGISTER:</b>	<a href="http://www.kellysports.com.au">www.kellysports.com.au</a>
<b>ENQUIRIES:</b>	Ian Barnes 0439 063 916 or <a href="mailto:ianbarnes@kellysports.com.au">ianbarnes@kellysports.com.au</a>



Address: 2 Marlborough Road, Westbourne Park, SA 5041  
 Website: [www.wbourneps.sa.edu.au](http://www.wbourneps.sa.edu.au)  
 Email: [dl.0475\\_info@schools.sa.edu.au](mailto:dl.0475_info@schools.sa.edu.au)  
 Fax: 8373 3057  
 Find us on:



Government  
of South Australia  
Department for Education  
and Child Development





**Clarence Park  
Community Kindergarten**


5 Parker Tce Clarence Park

**ENROL NOW**  
FOR NEXT YEAR

Do you have a child turning 4 before the 1<sup>st</sup> May 2020 and have not as yet enrolled in Preschool Kindergarten?


If you reside in our local catchment area, or your child has a sibling who previously attended Clarence Park Community Kindergarten, enrol now as spaces are filling fast.

<http://clarenpkgn.sa.edu.au/>



**UNLEY HIGH  
SCHOOL**

101 Kitchener Street,  
Netherby SA.  
8394 5400  
[info@uhs.sa.edu.au](mailto:info@uhs.sa.edu.au)  
[www.uhs.sa.edu.au](http://www.uhs.sa.edu.au)




## 2019 TERM 3 PRINCIPAL'S TOUR



### PRINCIPAL'S TOUR

9.30am - 10.30am

Bookings essential for Principal's Tours  
Register at: [tours@uhs.sa.edu.au](mailto:tours@uhs.sa.edu.au)

Wednesday  
**JULY  
31**



# baseball




Free

## July School Holidays Come and Try

July 12th 2019



**who**

Age 5 - 7  
Age 8 +

**where**

Diamond Sports  
Barrett Reserve, West Beach

**when**

9:30-11:30am  
12 - 2pm

**ADELAIDE BASEBALL CLUB**

Bookings Essential - Phone 0431 420 570

Address: 2 Marlborough Road, Westbourne Park, SA 5041  
 Website: [www.wbourneps.sa.edu.au](http://www.wbourneps.sa.edu.au)  
 Email: [dl.0475\\_info@schools.sa.edu.au](mailto:dl.0475_info@schools.sa.edu.au)  
 Fax: 8373 3057  
 Find us on:





# SCHOOL HOLIDAY NETBALL CLINIC

*Join us for a fun and interactive session of skills and drills*

**DATE:** Sunday 21 July 2019

**VENUE:** Priceline Stadium, Mile End

**TIME:** 10.00am - 12 noon (8-13 years of age)  
12 noon - 2.00pm (14-17 years of age)

**COST:** Free

To register or for more details visit: [cheerionetball.com](http://cheerionetball.com)  
email: [headcoach@cheerionetball.com](mailto:headcoach@cheerionetball.com)  
phone: 0452 387 003





## SCHOOL HOLIDAY SOCCER PROGRAM

10, 11 & 12 July – 12.30pm to 4pm

Held at Ascot Park Primary School Sports Centre

\*\*\* Only \$99 for 3 days \*\*\*

The 1st 15 People get a free Aldi Mini Roos Participation pack valued at \$40.00



Payments to be made via EFT  
Tom Monsigneur  
BSB: 633-000  
ACC: 159 559 608

To Register please return registration form to [tom.monsigneur@gmail.com](mailto:tom.monsigneur@gmail.com)  
Registrations Close Friday 5<sup>th</sup> July

FULL NAME: \_\_\_\_\_  
DATE OF BIRTH: \_\_\_\_\_  
CLUB & AGE GROUP: \_\_\_\_\_  
SCHOOL ATTENDING: \_\_\_\_\_  
EMERGENCY CONTACT: \_\_\_\_\_  
CONTACT E-MAIL: \_\_\_\_\_

(once payment and registration form is received you will be sent confirmation e-mail)



## Creative Music Workshops

Mitcham Memorial Library

Thursday 18 July

2 sessions:  
2pm to 2.45pm  
3pm to 3.45pm

A fun 45 minute session devoted to developing confidence, engagement, inclusion and creative expression through music.

A fast paced workshop exploring melody and rhythm.  
Designed for all abilities

Bookings taken for 8 years & over. \$5 per child.  
Bookings essential with payment | Limited spaces



**MITCHAM LIBRARY SERVICE**

library.mitchamcouncil.sa.gov.au  
Mitcham Library 8372 8244  
Blackwood Library 8372 8255

## ENCOURAGING A LOVE FOR THE ARTS



PROVIDING AFTER SCHOOL AND HOLIDAY THEATRE WORKSHOPS FOR YOUNG PEOPLE 5-13 YRS WANTING TO HAVE FUN, LEARN, DEVELOP AND ENHANCE SKILLS IN PERFORMANCE & THEATRE MAKING



[simonegritstudiocollective.com.au](http://simonegritstudiocollective.com.au)  
[www.gritstudiocollective.com.au](http://www.gritstudiocollective.com.au)  
t: 0401 066 339

Address: 2 Marlborough Road, Westbourne Park, SA 5041  
Website: [www.wbourneps.sa.edu.au](http://www.wbourneps.sa.edu.au)  
Email: [dl.0475\\_info@schools.sa.edu.au](mailto:dl.0475_info@schools.sa.edu.au)  
Fax: 8373 3057  
Find us on:

